



**Melissa Alvarez-Downing, MD FACS, FASCRS**

Assistant Professor, Assistant Program Director, Clerkship Director  
Department of Surgery  
New Jersey Medical School

Melissa M. Alvarez-Downing, MD, FACS, FASCRS is a colorectal surgeon at Rutgers New Jersey Medical School, where she also serves as an Assistant Program Director for the general surgery residency and Clerkship Director for the 3<sup>rd</sup> year medical student clerkship. Her clinical interests include all aspects of benign and malignant colon and rectal diseases, colon cancer screening and implementation of enhanced recovery after surgery protocols. In her practice, Dr. Alvarez-Downing is committed to advocating for her mostly minority patient population by improving their experience and navigation through the healthcare system. She is actively involved in teaching and mentoring of medical students, residents and underserved Latinx students. She is a wife and proud mother to three young children. You can follow her on Twitter at @AlvarezDowning.



**Diane Calello, MD**

Professor  
Department of Emergency Medicine  
New Jersey Medical School  
Executive and Medical Director  
New Jersey Poison Information and Education System

Diane Calello is the Executive and Medical Director of the New Jersey Poison Information and Education System and Professor of Emergency Medicine at Rutgers New Jersey Medical School. She is board certified in Pediatrics, Pediatric Emergency Medicine, Medical Toxicology and Addiction Medicine, and is a national expert on pediatric poisoning fatalities, lead poisoning, the impact of cannabis legalization on public health, vaping-associated pulmonary illness, and the use of poison control centers for public health emergency infrastructure and surveillance. Dr. Calello has served in numerous capacities throughout the medical school as well as RBHS, and established the NJ Coronavirus Hotline at NJPIES in response to the pandemic to support the statewide crisis response, which remains an active component of the fight against COVID-19 in the Garden State.



**Nataki Douglas, MD, PhD**

Associate Professor, Director of Translational Research  
Department of Obstetrics, Gynecology & Women's Health  
New Jersey Medical School

Nataki Douglas, MD, PhD is Associate Professor, Director of Translational in the Department of Obstetrics, Gynecology and Reproductive Health. She is a member of the RBHS Diversity Leadership Council. Dr. Douglas is a clinician scientist. She is a practicing Reproductive Endocrinology and Infertility specialist who conducts basic and translational research. Dr. Douglas' research seeks to define the uterine microenvironment that supports embryo implantation and healthy pregnancy outcomes.



**Heba Elkassaby, BDS**

Assistant Professor, Director of Digital Dentistry  
Department of Restorative Dentistry  
School of Dental Medicine

Dr. Heba Elkassaby received her BDS and a master's degree in fixed prosthodontics from Ain-Shams University Faculty of Dentistry in Cairo, Egypt. She earned her specialty certificate in prosthodontics from New York University College of Dentistry. She is a former Program Director of the Postdoctoral Prosthodontics program at Stony Brook School of Dental Medicine. She received her DMD degree from Rutgers School of Dental Medicine. Currently, Dr. Elkassaby is an Assistant Professor and Director of Digital Dentistry in the Department of Restorative Dentistry at Rutgers School of Dental Medicine.



**Patricia Fitzgerald-Bocarsly, PhD**

Co-chair, Women and Gender Equity Faculty Council  
Provost - Rutgers Biomedical and Health Sciences, Newark Campus  
Professor  
Department of Pathology, Immunology and Laboratory Medicine  
New Jersey Medical School

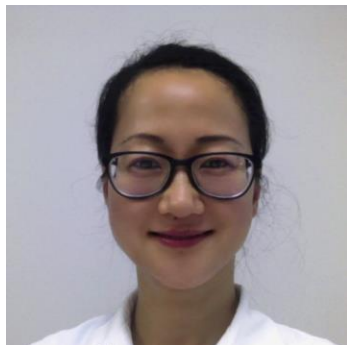
Patricia Fitzgerald-Bocarsly, PhD is co-chair of the RBHS WGEC. She is a long-time tenured faculty member at New Jersey Medical School in the Department of Pathology, Immunology and Laboratory Medicine and has been the RBHS Provost- Newark since 2018. Her research interests are in human viral immunology and immune senescence and is currently applying those studies to immunological and molecular mechanisms of senescence in healthy aging and in individuals with HIV infection and/or COVID-19.



**Ashley Grosso, PhD**

Assistant Professor  
Department of Urban-Global Public Health  
Rutgers School of Public Health

Ashley Grosso, PhD is an Assistant Professor of Urban-Global Public Health in the Rutgers School of Public Health and a member in residence at the Rutgers Institute for Health, Health Care Policy and Aging Research. Dr. Grosso received her PhD from the Rutgers School of Public Affairs and Administration. She conducts research in Sub-Saharan Africa on HIV risks among female sex workers and men who have sex with men. Her research in the United States is focused on evaluating sex education policies and programs.



**Wei Huang, D.D.S. Ph.D. M.S.D.**

Assistant Professor  
Department of Orthodontics  
School of Dental Medicine

Dr. Huang earned her Ph.D. in biological sciences in dental medicine from Harvard University, an M.S.D. in orthodontics from Indiana University and her initial dental and orthodontic training from Peking University. Dr. Huang is currently assistant professor in the Department of Orthodontics at RSDM. Besides her clinical expertise in a wide range of malocclusions, Dr. Huang also leads several major research projects such as translation of molecular mechanisms of bone modeling and remodeling into applicable clinical models for accelerated orthodontics, novel treatment modalities for challenging clinical conditions such as tooth ankylosis and dental device innovation and technology development.



**Cynthia Koziol-White, PhD**

Assistant Professor  
Department of Pharmacology  
Robert Wood Johnson Medical School  
Rutgers Institute for Translational Medicine and Science

Cynthia Koziol-White is an Assistant Professor in the Pharmacology Department at Robert Wood Johnson Medical School in New Brunswick, NJ. Dr. Koziol-White completed her undergraduate degree at Clarkson University, and her PhD at University of Wisconsin-Madison. She completed two postdocs at University of Pennsylvania. Dr. Koziol-White teaches both biomedical masters students and M2 students in principles of pharmacology as well as therapies used in the treatment of asthma and COPD. Her research interests include viral exacerbations of airway diseases and understanding mechanisms of contraction and relaxation of the airways in the context of airways disease.



**Sangeeta Lamba, MD, MS-HPed**

Co-chair, Women and Gender Equity Faculty Council

Vice Chancellor for Diversity and Inclusion

Professor

Department of Emergency Medicine

New Jersey Medical School

Sangeeta Lamba, MD, MS-HPed is the Vice Chancellor for Diversity and Inclusion (VCDI) at Rutgers Biomedical and Health Sciences (RBHS). She leads and coordinates RBHS efforts to foster opportunities for diversity and inclusion with special emphasis on academic and faculty advancement. Dr. Lamba is a Professor of Emergency Medicine at Rutgers New Jersey Medical School (NJMS) with training in internal medicine, emergency medicine, and hospice and palliative medicine, and she continues to have an active role in both medical education and patient care. She leads local and national empowerment workshops that address implicit and gender bias, microaggressions, and offer strategies to mitigate bias and build a climate of respect and allyship.



**Carol Lutz, PhD**

Associate Dean, Student Affairs

School of Graduate Studies

Associate Professor

Department of Microbiology, Biochemistry and Molecular Genetics

New Jersey Medical School

Carol Lutz, PhD, is an Associate Professor in the Department of Microbiology, Biochemistry and Molecular Genetics at NJMS. She also serves as the Associate Dean for Student Affairs for the School of Graduate Studies on the Newark Health Science campus. Dr. Lutz received her BS with Highest Honors from the University of North Carolina, Chapel Hill, and her PhD from Duke University. After completing her post-doctoral training at the University of Pennsylvania, she accepted a faculty job at NJMS. Her lab studies post-transcriptional gene expression regulation in lung cancer.



**Rachel Meyers, PharmD, BCPS, BCPPS, FPPA**

Clinical Associate Professor

Department of Pharmacy Practice & Administration

Ernest Mario School of Pharmacy

Rachel Meyers is a Clinical Associate Professor at the Ernest Mario School of Pharmacy at Rutgers University, and the Pediatric Clinical Pharmacist at Saint Barnabas Medical Center in Livingston, New Jersey. Dr. Meyers completed her undergraduate degree at the University of Mary Washington and her Doctor of Pharmacy degree at the University of Connecticut. After graduation she completed a PGY-1 residency at the University of Wisconsin Hospital and

Clinics in Madison, Wisconsin, and a PGY-2 residency in Pediatric Pharmacotherapy at the University of North Carolina Children's Hospital in Chapel Hill, North Carolina. Dr. Meyers provides both didactic and experiential education in pediatric pharmacotherapy for pharmacy students and residents. She practices in the Pediatric Intensive Care Unit and General Pediatric Unit at Saint Barnabas Medical Center. Her research interests include pediatric critical care, infectious diseases, and dosage forms for children.



**Lori Palfreyman, MS, PA-C**

Assistant Professor, Assistant Director of Admissions and Program Assessment

Department of Physician Assistant Studies

School of Health Professions

Lori Palfreyman is the Assistant Director of Admissions and Program Assessment at the Rutgers Physician Assistant (PA) Program. She is a PA specializing in Women's Health and has been a faculty member at Rutgers/UMDNJ for 23 years. In May 2021 she will complete her Doctorate in Health Sciences with a concentration in Global Health. Ms. Palfreyman's areas of interest include holistic admissions, diversity and inclusion climate research, mentorship, and gender equity.



**Shelby M. Pitts, DNP, RN, WHNP-BC**

Assistant Professor, Interim Program Director  
Entry to Baccalaureate Practice Division  
School of Nursing

Dr. Pitts received a Bachelor of Science in Nursing (BSN) from Temple University College of Nursing, Master of Science in Nursing (MSN) from Rutgers University School of Nursing and Doctor of Nursing Practice (DNP) from Johns Hopkins University School of Nursing. As a faculty member at Rutgers University School of Nursing, she serves as Interim Program Director RN BS program and teaches obstetrics in graduate and undergraduate programs. In addition to her academic appointment, Dr. Pitts is a board-certified Women's Health Advanced Practice Nurse. She is an active member of Nurse Practitioners in Women's Health (NPWH), Association of Women's Health, Obstetric and Neonatal Nurses (AWOHNN) and Sigma Theta Tau International Honor Society. Dr. Pitts' scholarship focus has been on maternal and infant health outcomes.



**Phoebe Stapleton, PhD, ATC**

Assistant Professor  
Department of Pharmacology and Toxicology  
Ernest Mario School of Pharmacy  
Environmental and Occupational Health Sciences Institute

Dr. Stapleton is a tenure-track Assistant Professor in the Pharmacology and Toxicology Department of the Ernest Mario School of Pharmacy. Dr. Stapleton's laboratory studies the cardiovascular implications of maternal exposure to nanomaterials during pregnancy, identifying the maternal, fetal, and offspring outcomes associated with these exposures. Most of her work has focused on inhalation of titanium dioxide nanoparticles, but recently Dr. Stapleton had begun to investigate toxicological outcomes associated with nanosized plastic particles. Dr. Stapleton's primary teaching obligations in EMSOP include our pre-professional Physiology course for PP2 Pharmacy student applicants and Hematology module for our P2 students.



**Riva Touger-Decker, PhD**

Professor, Chair, Associate Dean, Global Affairs  
Department of Clinical and Preventative Nutritional Sciences  
School of Health Professions

Dr. Touger-Decker is the Rutgers School of Health Professions Associate Dean of Global Affairs and Professor and Chair of the Department of Clinical and Preventive Nutrition Sciences. She is also the Director of the Nutrition Division in the Rutgers School of Dental Medicine. She is a registered dietitian, internationally recognized for her expertise and leadership in nutrition and oral health, dental education, nutrition focused physical examination, and dietetics education and serves on the Rutgers Global Health Institute Executive Committee. Her research has explored diet/nutrition and orofacial pain, tooth loss, and head and neck cancers, worksite wellness, and nutrition focused physical exam practices of dietitians. She has authored multiple peer reviewed publications and has been awarded the American Dietetic Association Medallion and Excellence in Dietetic Education Awards and the American Society for Clinical Nutrition Dannon Institute Award for Excellence in Medical/Dental Nutrition Education. She is a Fellow, New York Academy of Medicine. Dr. Touger-Decker has served as a program reviewer for dietetics and nutrition programs in the U.S., Japan, Israel, Malaysia, and Tanzania where she has also collaborated on the development of health professions programs and training courses.



**Laura Willett, MD, FACP**

Professor of Medicine, Division of Education  
Associate Program Director, Internal Medicine Residency  
Co-Course Director, M2 Foundations course  
Rutgers Robert Wood Johnson Medical School

Laura Willet is has worked in general internal medicine at Robert Wood Johnson Medical (RWJMS) School since 1989. Dr. Willet is a clinician educator, with course/clerkship administration and classroom teaching experience, and has done research in medical education. In the past several years, she has become more active in faculty representation, including the RWJMS faculty council, RBHS faculty council, and Rutgers University Senate Executive Committee. Dr. Willet's interests include compensation equity, criteria for promotion in non-tenure tracks, faculty governance in setting of the Barnabas affiliation, and student/GME issues.