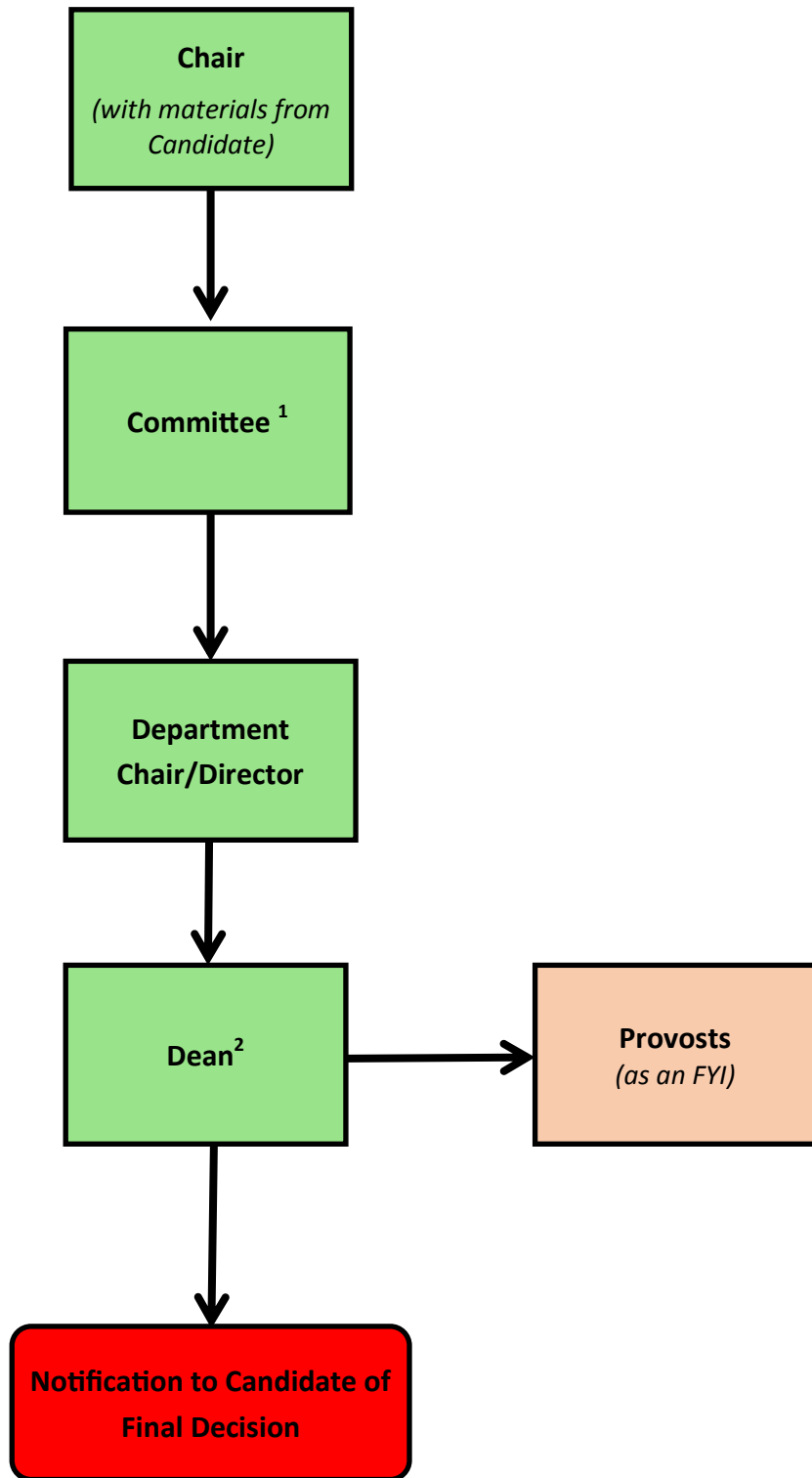


**RBHS Flow Chart for  
Non-Tenure Track, Full Title Reappointments**

**SHORT FORM**



<sup>1</sup> A committee evaluation/vote is required for all Non-Tenure Track Full Title Reappointments, except RBHS Lecturer and RBHS Instructor, see pages 1-2 of the Short Form for committee requirements.

<sup>2</sup> Final decisions on non-tenure track reappointments (regardless of rank) will rest with the Deans.